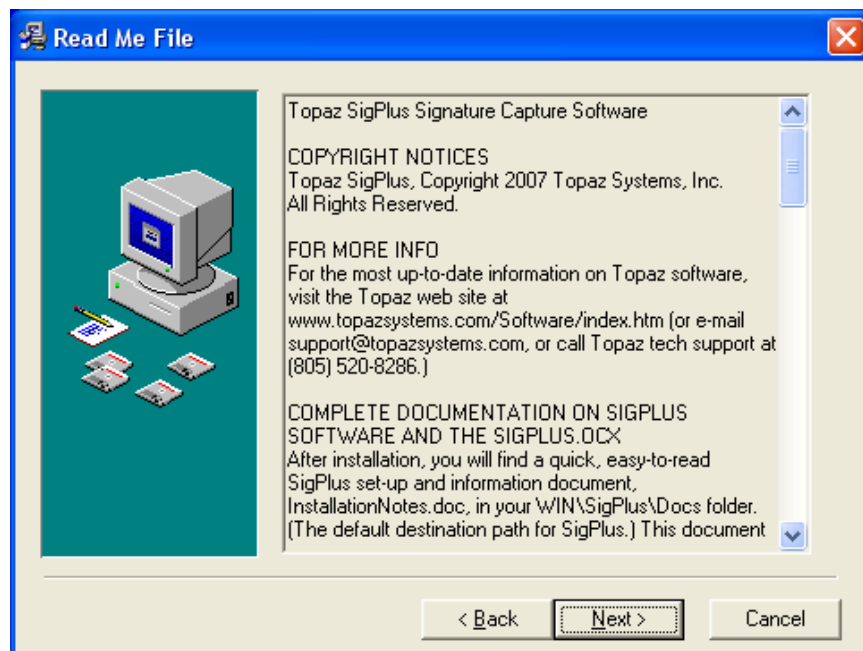
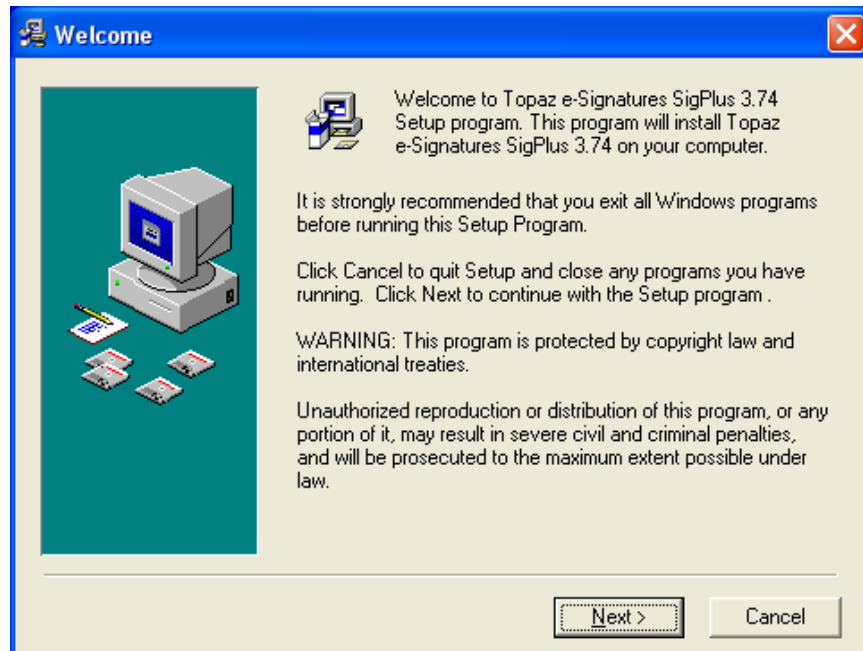
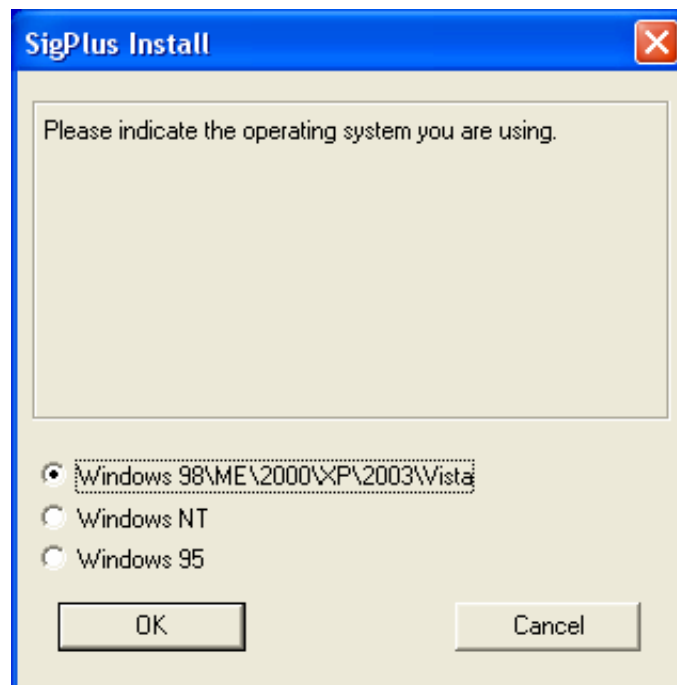
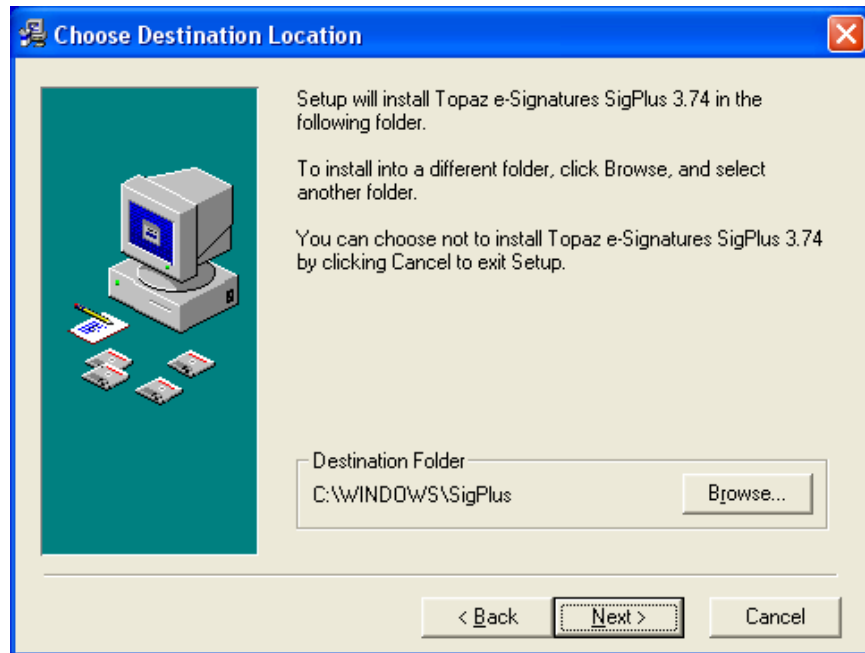





## Protractor – Topaz T-L-460 Installation









**Choose the Tablet** 

Please choose your tablet.

If you are not sure, match the model number on the back of your tablet with a model number below.

- ☐ SignatureGem 1X5 (T-S261)
- ☐ SignatureGem 4X5 (T-S751)
- ☐ SignatureGem LCD 1X5 (T-L462)
- ☐ SignatureGem LCD 4X3 (T-L755)
- ☐ ClipGem (T-C912 or T-C912-19200)
- ☐ ClipGem LGL (T-C916)
- ☐ SigLite LCD 4X3 (T-L750)
- ☐ LCD 4X5 (T-L760 or T-L766)
- ☐ SigLite 1X5 (T-S460 or T-S461)
- ☒ SigLite LCD 1X5 (T-L460)



**Select the Connection Type** [X]

Please choose your tablet's connection type.

If serial, choose the Com port. A serial tablet's model number (found on the back of the tablet) ends with -B.

If you wish to use the USB port (-HSB pad), please choose the "HSB" option.

☐ Com 1

☐ Com 2


☐ Com 3

☐ Com 4

☒ HSB (USB type)

OK Cancel

**HSB TABLET MESSAGE** [X]

 If you have already plugged in your HSB tablet, please UNPLUG IT NOW.

OK Cancel

